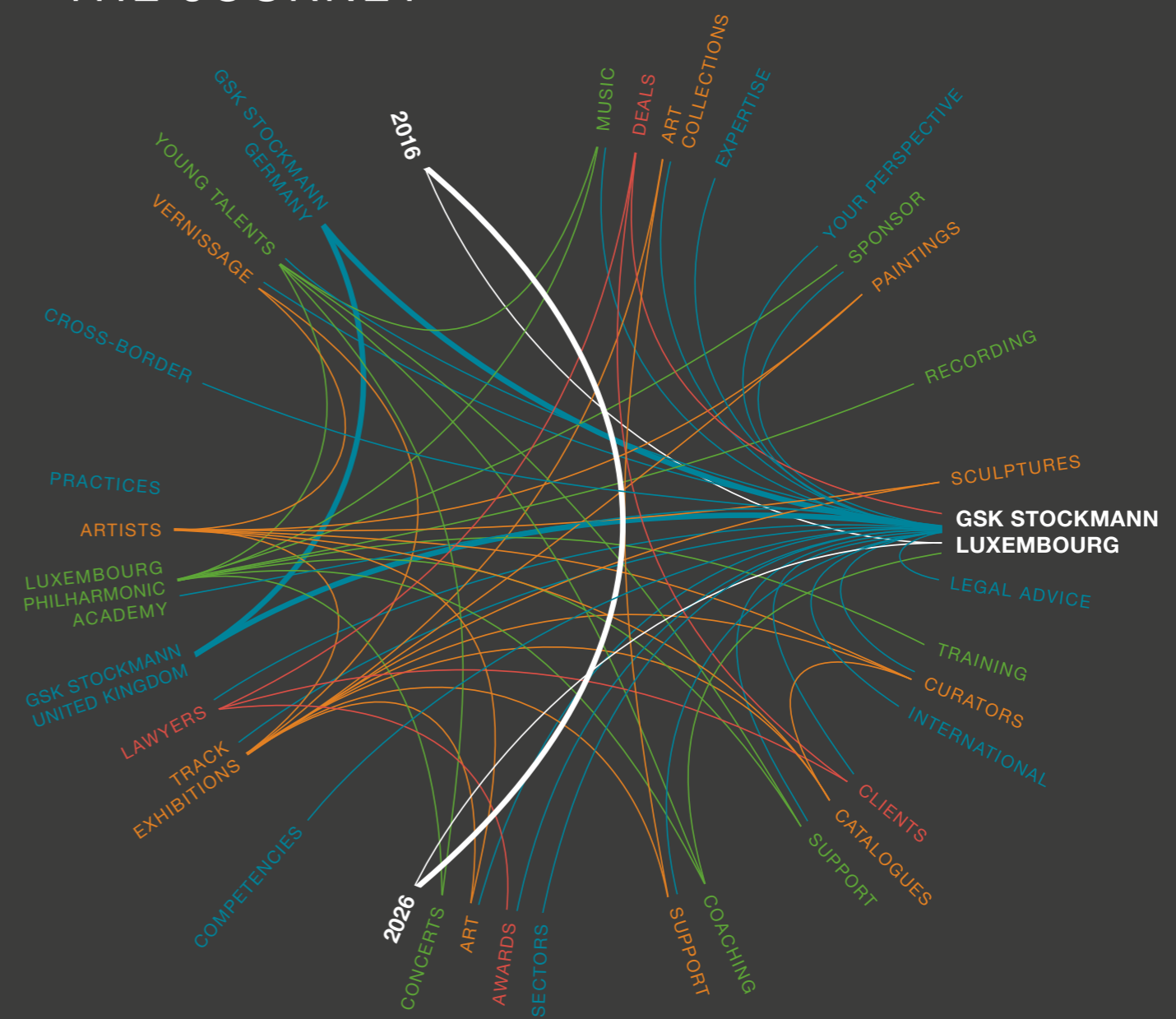
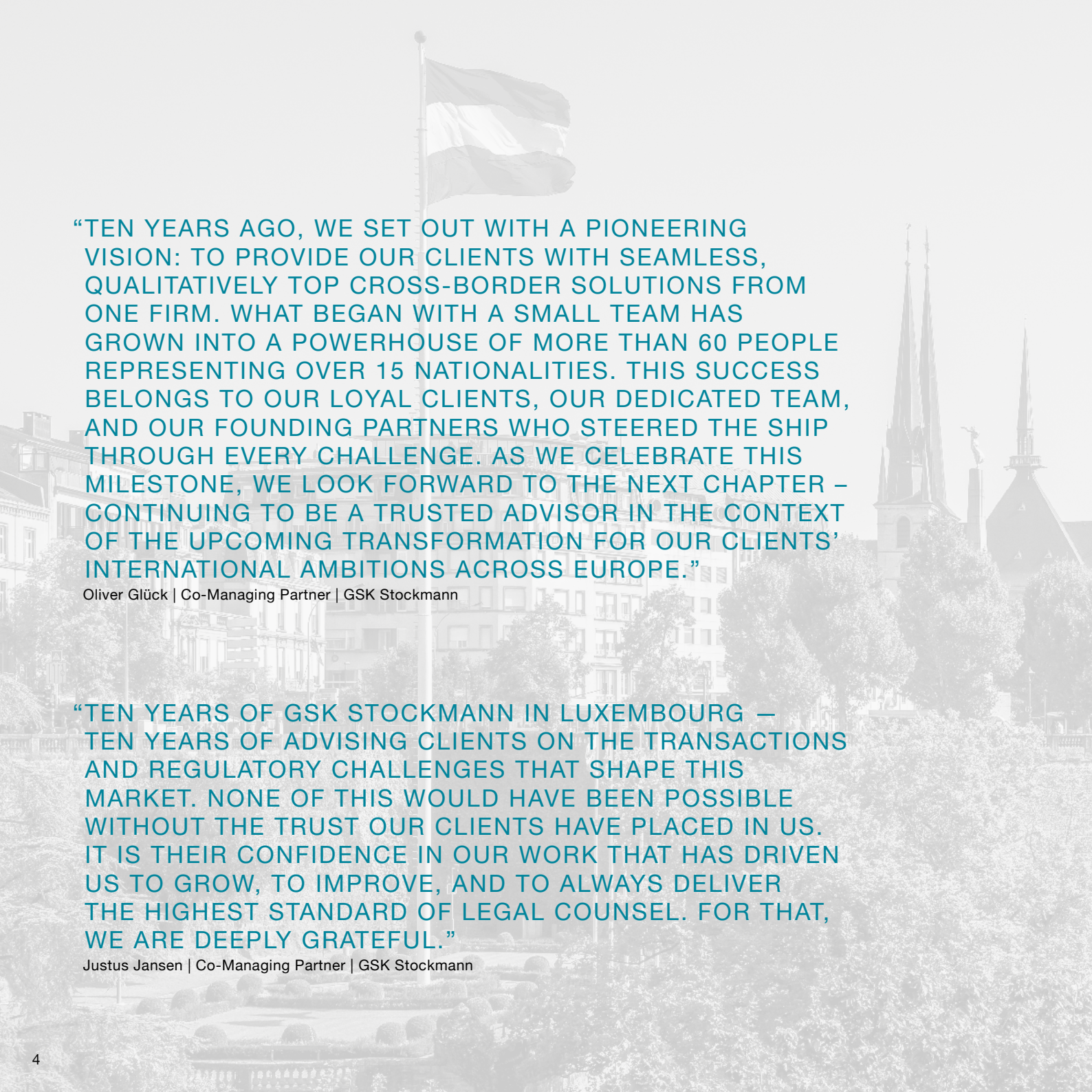


THE JOURNEY





“TEN YEARS AGO, WE SET OUT WITH A PIONEERING VISION: TO PROVIDE OUR CLIENTS WITH SEAMLESS, QUALITATIVELY TOP CROSS-BORDER SOLUTIONS FROM ONE FIRM. WHAT BEGAN WITH A SMALL TEAM HAS GROWN INTO A POWERHOUSE OF MORE THAN 60 PEOPLE REPRESENTING OVER 15 NATIONALITIES. THIS SUCCESS BELONGS TO OUR LOYAL CLIENTS, OUR DEDICATED TEAM, AND OUR FOUNDING PARTNERS WHO STEERED THE SHIP THROUGH EVERY CHALLENGE. AS WE CELEBRATE THIS MILESTONE, WE LOOK FORWARD TO THE NEXT CHAPTER – CONTINUING TO BE A TRUSTED ADVISOR IN THE CONTEXT OF THE UPCOMING TRANSFORMATION FOR OUR CLIENTS’ INTERNATIONAL AMBITIONS ACROSS EUROPE.”

Oliver Glück | Co-Managing Partner | GSK Stockmann

“TEN YEARS OF GSK STOCKMANN IN LUXEMBOURG – TEN YEARS OF ADVISING CLIENTS ON THE TRANSACTIONS AND REGULATORY CHALLENGES THAT SHAPE THIS MARKET. NONE OF THIS WOULD HAVE BEEN POSSIBLE WITHOUT THE TRUST OUR CLIENTS HAVE PLACED IN US. IT IS THEIR CONFIDENCE IN OUR WORK THAT HAS DRIVEN US TO GROW, TO IMPROVE, AND TO ALWAYS DELIVER THE HIGHEST STANDARD OF LEGAL COUNSEL. FOR THAT, WE ARE DEEPLY GRATEFUL.”

Justus Jansen | Co-Managing Partner | GSK Stockmann

GOING THE EXTRA MILE

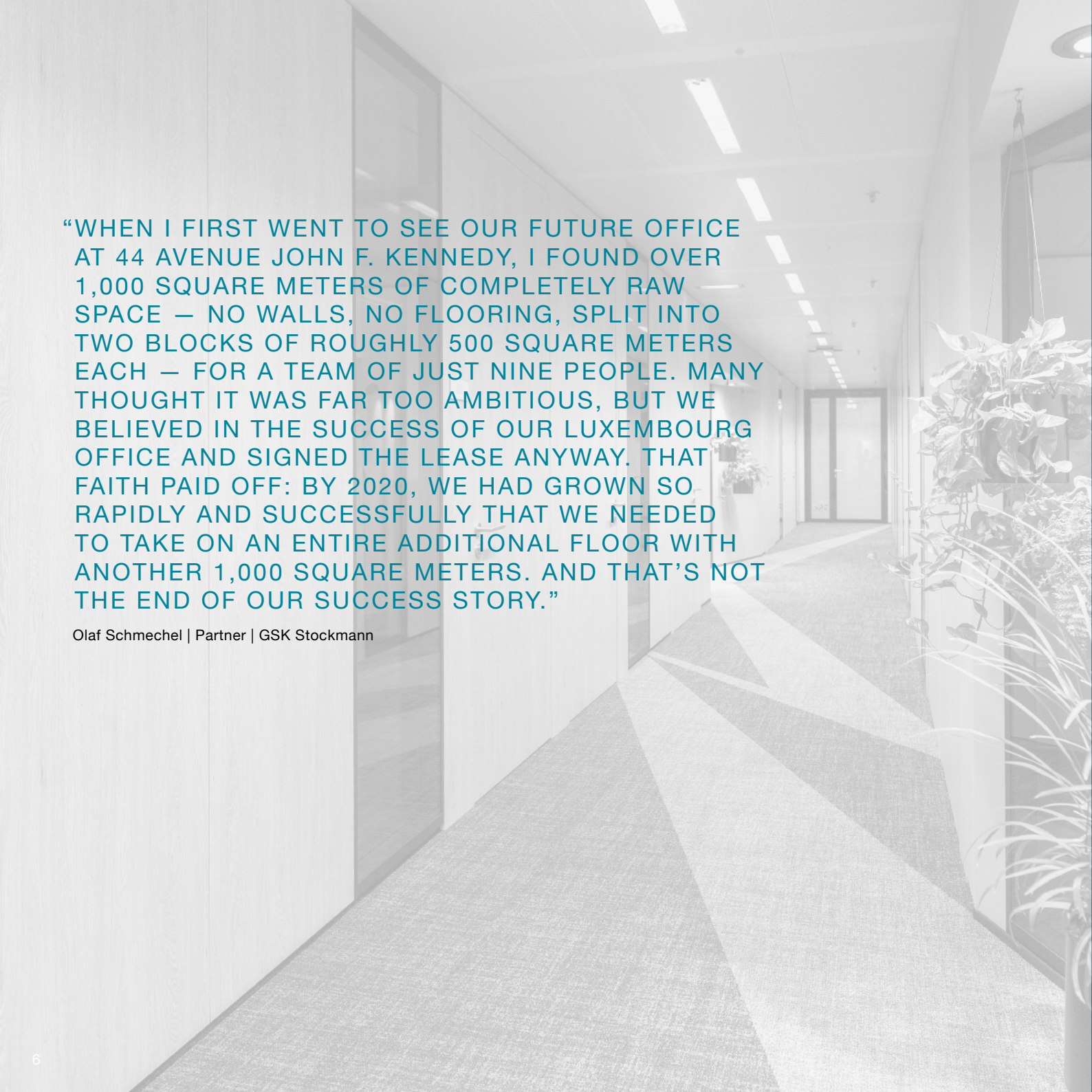
Taking a journey through the past 10 years, this book is not strictly chronological, but rather a selection of moments, people and initiatives that have shaped the Luxembourg office over its first decade in operation. It reflects on the team’s legal work, growth, culture, partnerships and the belief that a law firm can contribute to the environment in which it operates.

Above all, it is a reflection of a journey that will continue above and beyond. Always!

PART 1
WHO WE ARE AND WHAT WE DO

PART 02
OUR JOURNEY

PART 03
SUPPORTING THE ARTS



“WHEN I FIRST WENT TO SEE OUR FUTURE OFFICE AT 44 AVENUE JOHN F. KENNEDY, I FOUND OVER 1,000 SQUARE METERS OF COMPLETELY RAW SPACE — NO WALLS, NO FLOORING, SPLIT INTO TWO BLOCKS OF ROUGHLY 500 SQUARE METERS EACH — FOR A TEAM OF JUST NINE PEOPLE. MANY THOUGHT IT WAS FAR TOO AMBITIOUS, BUT WE BELIEVED IN THE SUCCESS OF OUR LUXEMBOURG OFFICE AND SIGNED THE LEASE ANYWAY. THAT FAITH PAID OFF: BY 2020, WE HAD GROWN SO RAPIDLY AND SUCCESSFULLY THAT WE NEEDED TO TAKE ON AN ENTIRE ADDITIONAL FLOOR WITH ANOTHER 1,000 SQUARE METERS. AND THAT’S NOT THE END OF OUR SUCCESS STORY.”

Olaf Schmechel | Partner | GSK Stockmann

PART 01 WHO WE ARE AND WHAT WE DO

ABOUT GSK STOCKMANN

GSK Stockmann is a leading, independent European law firm with over 250 professionals across offices in Germany, Luxembourg and the UK.

Founded in 2016, the Luxembourg office of GSK Stockmann is the trusted adviser of leading financial institutions, asset managers, private equity houses, insurance companies, corporates and FinTech companies, with both a local and international reach. Our lawyers advise domestic and international clients in relation to Banking & Finance, Capital Markets, Corporate | M&A | Private Equity, Investment Funds, Real Estate, Regulatory and Insurance as well as Tax, Dispute Resolution, Labour Law and Social Security Law.

OUR WORK

Over the past decade, GSK Stockmann in Luxembourg has advised on many of Luxembourg's most significant, complex, cross-border deals reflecting the continued growth and breadth of a multi-disciplinary team and quality of client service. The firm's approach has been honoured in national and international legal directories and rankings.



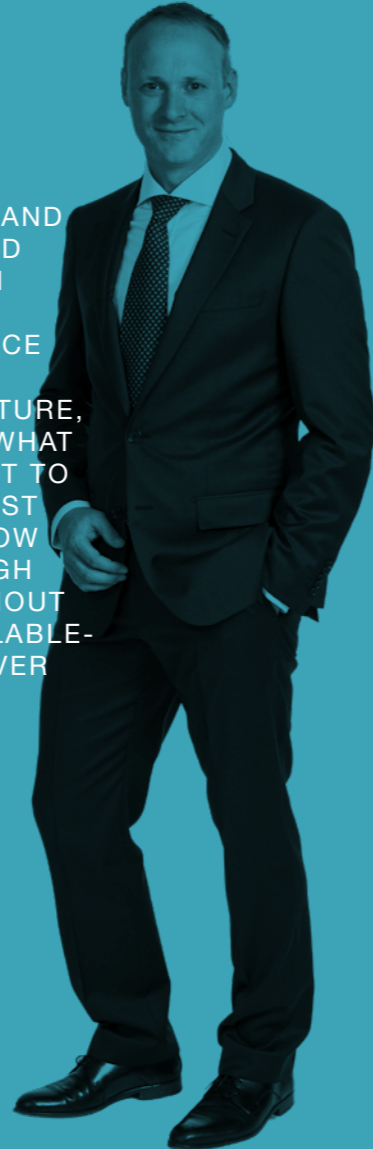
Chambers AND PARTNERS



THE BEGINNING

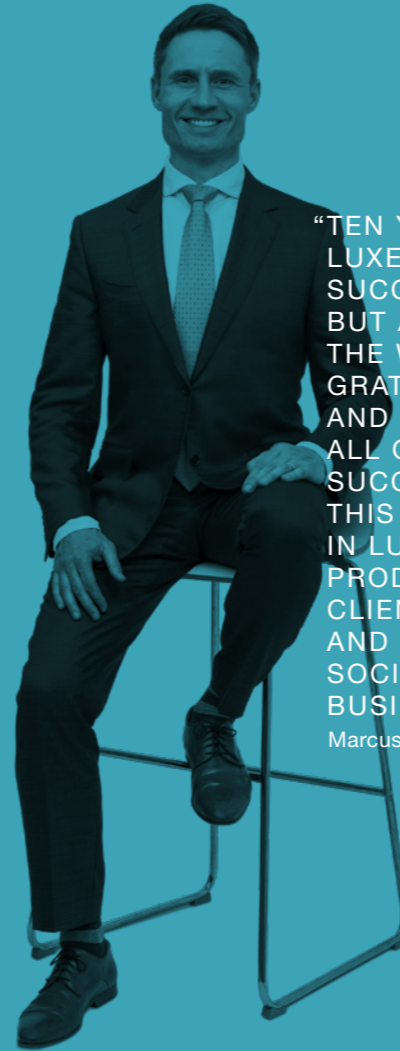
“TEN YEARS AGO, THREE PARTNERS AND A DEEPLY COMMITTED TEAM OPENED THE DOORS OF GSK STOCKMANN IN LUXEMBOURG. TODAY, MORE THAN 60 PROFESSIONALS CALL THIS OFFICE HOME — NOT BECAUSE THE HOURS DEMAND IT, BUT BECAUSE THE CULTURE, THE PEOPLE AND THE QUALITY OF WHAT WE DO TOGETHER MAKE THEM WANT TO BE HERE. WHAT MAKES ME PROUDEST IS NOT THE GROWTH ITSELF BUT HOW WE GREW — ORGANICALLY, THROUGH TALENT NURTURED IN-HOUSE, WITHOUT EVER IMPOSING A CULTURE OF BILLABLE-HOURS PRESSURE AND WITHOUT EVER COMPROMISING ON WHO WE ARE. IT WORKS.

Philipp Mössner | Partner | GSK Stockmann



“TEN YEARS OF GSK STOCKMANN IN LUXEMBOURG HAVE BEEN AN INCREDIBLE SUCCESS — BUILT THROUGH HARD WORK, BUT ALSO WITH A LOT OF FUN ALONG THE WAY! I WOULD LIKE TO EXPRESS MY GRATITUDE TO OUR TEAMS, OUR CLIENTS AND OUR GSK COLLEAGUES IN GERMANY, ALL OF WHOM HAVE CONTRIBUTED TO THIS SUCCESS. I LOOK FORWARD TO CONTINUING THIS JOURNEY WITH GSK STOCKMANN IN LUXEMBOURG AS A GREAT LAW FIRM PRODUCING HIGH-QUALITY WORK FOR OUR CLIENTS, ALWAYS WITH A POSITIVE ATTITUDE AND NEVER FORGETTING THE HUMAN AND SOCIAL TOUCH THAT IS NECESSARY TO MAKE BUSINESS SUCCESSFUL.”

Marcus Peter | Partner | GSK Stockmann



“WE ARE GRATEFUL TO ALL CLIENTS, LAWYERS AND COLLEAGUES WHO SUPPORTED THE JOURNEY OF GSK STOCKMANN IN LUXEMBOURG — ONWARDS AND UPWARDS TO THE NEXT 10 YEARS.”

Andreas Heinzmann | Partner | GSK Stockmann



TODAY'S PARTNERSHIP



From left to right:

Corinna Schumacher
Investment Funds

Andreas Heinzmann
Capital Markets, Financial Services

Dr. Manuel Fernandez
Capital Markets, Financial Services,
Corporate Litigation

Daniel Nerl
Labour Law | Social Security Law

Anna Lindner
Corporate | M&A, Finance

Valerio Scollo
Capital Markets, Financial Services

Dr. Philipp Mössner
Capital Markets, Real Estate

Dr. Marcus Peter
Private Equity, Investment Funds

Anna Gassner
Corporate | M&A, Private Equity

“WHAT BEGAN 10 YEARS AGO WITH REAL ENTREPRENEURIAL ENERGY AND THE MINDSET OF BUILDING SOMETHING NEW HAS DEVELOPED INTO A FIRMLY ESTABLISHED PRESENCE IN LUXEMBOURG. OVER THE PAST TEN YEARS, GSK STOCKMANN LUXEMBOURG HAS GROWN WITH AMBITION, RESILIENCE AND REAL STAYING POWER – WITHOUT LOSING THE SPIRIT THAT SHAPED ITS BEGINNINGS.”

Caroline Mühlfenzl | Independent Strategic Advisor

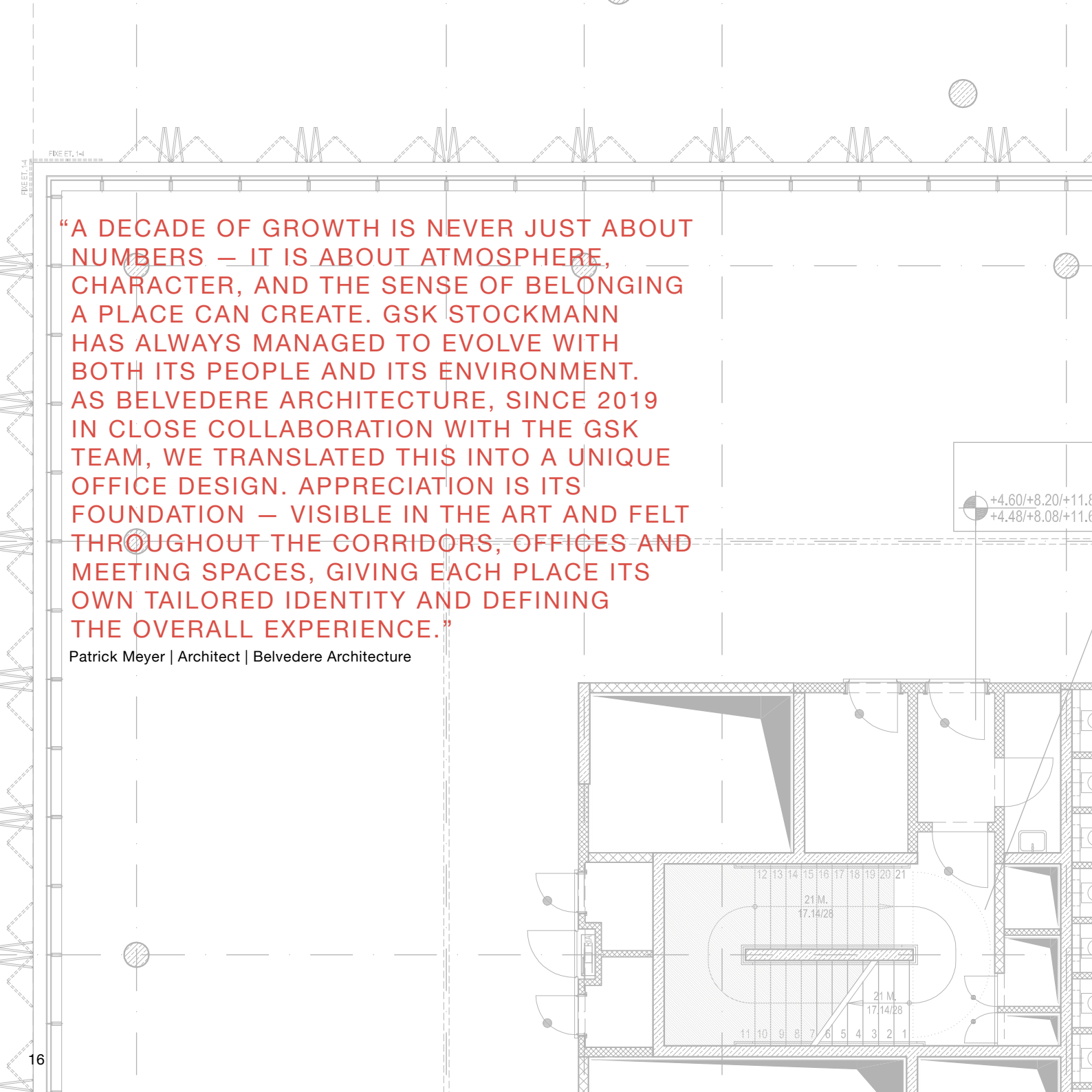
PART 02 OUR JOURNEY

LOOKING BACKWARD AND FORWARD

GSK Stockmann opened the doors to its Luxembourg office in 2016, marking the first step in an incredible journey. The ambition: Creating a platform to combine local strength with international reach, and delivering legal advice across borders in a seamless, direct and entrepreneurial way. What started with a small founding team and a start-up mentality soon developed into a success story.

Over the past decade, the Luxembourg office of GSK Stockmann has grown substantially – both, in size and identity – and, alongside its clients, business partners, colleagues and teams as well as the market.

Practice areas continually strengthened, teams expanded, office space increased, and relationships deepened. Milestones were often reached quietly – through trust, through consistency, and through the adaptability.



“A DECADE OF GROWTH IS NEVER JUST ABOUT NUMBERS – IT IS ABOUT ATMOSPHERE, CHARACTER, AND THE SENSE OF BELONGING A PLACE CAN CREATE. GSK STOCKMANN HAS ALWAYS MANAGED TO EVOLVE WITH BOTH ITS PEOPLE AND ITS ENVIRONMENT. AS BELVEDERE ARCHITECTURE, SINCE 2019 IN CLOSE COLLABORATION WITH THE GSK TEAM, WE TRANSLATED THIS INTO A UNIQUE OFFICE DESIGN. APPRECIATION IS ITS FOUNDATION – VISIBLE IN THE ART AND FELT THROUGHOUT THE CORRIDORS, OFFICES AND MEETING SPACES, GIVING EACH PLACE ITS OWN TAILORED IDENTITY AND DEFINING THE OVERALL EXPERIENCE.”

Patrick Meyer | Architect | Belvedere Architecture

OUR OFFICE

GSK Stockmann opened the doors to its Luxembourg office in 2016 in the Axento building on the Kirchberg plateau, the central business district of Luxembourg. As the Luxembourg office continued to grow, the decision was made to expand the office space to around 2,500 sqm spread across two floors. Due to the building's architecture, the floor plan of the office space is unique, and long connecting walkways are one of its defining features - reflecting the scale and rhythm of a growing office. The distinctive design is modern, light and creates a harmonic atmosphere.





MILESTONES 2016-2026

2016

OPENING
with 3 partners,
5 associates and
1 staff

VERNISSAGE
PRE-TRACK

2017

2018

VERNISSAGE TRACK 01
VERNISSAGE TRACK 02

2020

OFFICE
Move to 1st floor Axento
VERNISSAGE TRACK 03
REBRANDING

2021

VERNISSAGE AND
FINISSAGE TRACK 04

SPONSORING
of the newly founded Luxembourg
Philharmonic Academy (LPA)

5TH ANNIVERSARY

AWARDS

- Certified as Great Place to Work
- Great Place to Work: "One of the Best Workplaces in Luxembourg"
- Great Place to Work: "One of the Best Workplaces in Europe"
- IFLR Europe Awards 2021: Luxembourg Capital Markets Firm of the Year

VERNISSAGE TRACK 05
ANNOUNCEMENT
Opening of the London office

2023

VERNISSAGE TRACK 06

AWARD
Certified as
Great Place to Work



ANNOUNCEMENT
- Promotion to Equity Partner:
Valerio Scollo and Manuel Fernandez
- Welcome Anna Gassner as an
Equity Partner

2022

VERNISSAGE
TRACK 07

2024

AWARDS

- TopLegal Awards 2024:
Independent Italian Desk
of the Year
- The Lawyer European
Awards 2024: Law Firm of
the Year Benelux

OFFICE

Enlargement to the 3rd floor



2025

VERNISSAGE TRACK 08

ANNOUNCEMENT

- Welcome Daniel Nerl as a Local Partner
- Promotion to Equity Partner: Corinna Schumacher

AWARDS

- Certified as Great Place to Work
- Legalcommunity: Finance Award 2025 "Italian Desk"
- Legalcommunity: Corporate Award 2025 "Italian Desk"
- IFLR Europe Awards 2025: Deal of the Year:
High Yield – Telecom Italia notes exchange



2026

AWARD

Legal 500: Client Satisfaction Accolade:
Lawyer & Team Quality



**ANNIVERSARY
CELEBRATIONS**

10 years of GSK Stockmann in Luxembourg

TEAM

9 partners, 5 counsels and more than
25 associates and 25 staff



“FOR THE PAST TEN YEARS, GSK STOCKMANN HAS PLAYED A REMARKABLE ROLE IN STRENGTHENING THE LUXEMBOURGISH ART SCENE. WHAT BEGAN AS AN ANNUAL EXHIBITION INITIATIVE HAS EVOLVED INTO A DISTINCTIVE AND RESPECTED FORMAT: TRACK. WITH THE RECENT COMPLETION OF TRACK 08, THE SERIES STANDS AS A TESTAMENT TO SUSTAINED CULTURAL COMMITMENT AND THOUGHTFUL ARTISTIC VISION.

THE CONCEPT OF TRACK IS BOTH SIMPLE AND POWERFUL. EACH EDITION BRINGS TOGETHER TWO ESTABLISHED LUXEMBOURG-BASED ARTISTS WHOSE STYLES, TECHNIQUES, AND MEDIA MAY DIFFER SIGNIFICANTLY, YET HOLD THE POTENTIAL TO FORM A COMPLEMENTARY SYMBIOSIS. THE INVITATION IS NOT MERELY TO EXHIBIT EXISTING WORKS, BUT TO ENGAGE IN DIALOGUE — TO CREATE SPECIFICALLY FOR THE EXHIBITION AND, MOST IMPORTANTLY, TO CREATE TOGETHER. SIDE BY SIDE, ARTISTS ARE ENCOURAGED TO INSPIRE AND CHALLENGE ONE ANOTHER, GENERATING OUTCOMES THAT TRANSCEND INDIVIDUAL PRACTICE. IN ITS BEST MOMENTS, TRACK PRODUCES WORKS THAT ARE GREATER THAN THE SUM OF THEIR PARTS — TRUE ARTISTIC SYNERGIES.

GSK STOCKMANN’S SUPPORT EXTENDS FAR BEYOND PROVIDING EXHIBITION SPACE. EACH YEAR, THE FIRM ACQUIRES AT LEAST ONE ARTWORK FROM EVERY PARTICIPATING ARTIST, OFFERING DIRECT AND MEANINGFUL FINANCIAL SUPPORT. AT THE SAME TIME, THE EXHIBITIONS ARE PRESENTED WITH EXCEPTIONAL CARE: THOUGHTFULLY CURATED OPENINGS, BEAUTIFULLY PRODUCED CATALOGUES, ENGAGING SPEECHES, MUSIC, DISTINGUISHED GUESTS, AND A WIDE AND

APPRECIATIVE AUDIENCE. LUXEMBOURGISH ARTISTS ARE NOT ONLY SHOWCASED — THEY ARE PLACED IN A VALUED SPOTLIGHT.

IMPORTANTLY, THE COLLABORATIONS INITIATED THROUGH TRACK OFTEN CONTINUE BEYOND THE EXHIBITION ITSELF. THE DUOS FORMED DURING THE PROCESS FREQUENTLY OPEN NEW CREATIVE PATHS, SPARK FURTHER JOINT PROJECTS, AND STRENGTHEN CONNECTIONS WITHIN THE LOCAL ART COMMUNITY. IN THIS WAY, TRACK DOES NOT SIMPLY PRESENT ART; IT ACTIVELY SHAPES RELATIONSHIPS AND FOSTERS LASTING INTERSECTIONS WITHIN LUXEMBOURG’S CULTURAL LANDSCAPE.

I HAD THE PRIVILEGE OF EXPERIENCING THIS FIRSTHAND DURING TRACK 07, WHERE I COLLABORATED WITH JOEL ROLLINGER — A LONGTIME FRIEND AND ARTIST I HAVE DEEPLY ADMIRER, YET HAD NEVER PREVIOUSLY WORKED WITH ONE-ON-ONE. OUR SHARED PROCESS AND THE BODY OF WORK THAT EMERGED STAND AS CLEAR EVIDENCE THAT TRACK IS FAR MORE THAN A WELL-ORGANISED EXHIBITION. IT IS A CATALYST FOR ARTISTIC GROWTH, A PLATFORM FOR GENUINE EXCHANGE, AND, FOR US, A SIGNIFICANT MILESTONE THAT CONTINUES TO RESONATE IN OUR RESPECTIVE PRACTICES.

THROUGH TRACK, GSK STOCKMANN DEMONSTRATES THAT CORPORATE ENGAGEMENT WITH ART CAN GO BEYOND SPONSORSHIP. IT CAN BECOME A MEANINGFUL PARTNERSHIP — ONE THAT NURTURES CREATIVITY, BUILDS COMMUNITY, AND LEAVES A LASTING IMPRINT ON THE CULTURAL FABRIC OF LUXEMBOURG.”

Daniel Mac Lloyd | Artist

PART 03 SUPPORTING THE ARTS

COMMITMENT

We understand cultural engagement as a natural part of responsible corporate citizenship. Our commitment includes close ties to the Luxembourg Philharmonic Academy and to local artists whom we offer a regular platform to present contemporary Luxembourg art in our premises.



Joël Rollinger & Daniel Mac Lloyd

ART EXHIBITIONS

PAUL KIRPS
SPIKE

SIXTH FLOOR

FRANK JONS
STÉPHANIE UHRES


ST/CK
PHILIPPE LAMESCH

NADINE CLOOS
DANY PRUM
LAURE MACKEL

SUMI
THOMAS ISER

JOËL ROLLINGER
DANIEL MAC LLOYD

CHIARA DAHLEM
RAPHAEL GINDT




“GSK STOCKMANN HAS BEEN THE FIRST SUPPORT TO THE ACADEMY SINCE ITS CREATION IN 2021. THANKS TO THIS COMMON COLLABORATION, THE ACADEMY HAS BEEN DEVELOPING GREATLY, WELCOMING FROM 7 ACADEMICIANS IN 2021 TO 10 IN 2023 AND 11 IN 2026. THIS CONTINUED SUPPORT HAS GRANTED MANY ALUMNI SECURED PLACES IN GREAT ORCHESTRAS OF EUROPE AND MADE SURE TO PROVIDE QUALITY TRAININGS TO YOUNG TALENTED MUSICIANS.”

Marie Caillet | Treasurer | Luxembourg Philharmonic Academy

LUXEMBOURG PHILHARMONIC ACADEMY

The Luxembourg Philharmonic Academy was founded in 2021 and GSK Stockmann has supported the Academy as sponsors since its very beginning. Created to train and support the next generation of orchestra musicians, the Luxembourg Philharmonic's signature Academy offers young musicians from around the world two years of intensive orchestral training alongside the members of the Luxembourg Philharmonic — through concerts, tours, recordings and intensive coaching at the highest level.





“WHEN PAUL KIRPS APPROACHED ME IN 2018 WITH THE IDEA OF PRESENTING A DUO EXHIBITION WITHIN A LAW OFFICE, I WAS INTRIGUED BY THE UNUSUAL CONTEXT BUT ALSO HAPPY TO TAKE ON THE CHALLENGE. WHAT STARTED AS A SINGLE EXHIBITION QUICKLY PROVED TO BE A REWARDING EXPERIENCE. THE EVENT WAS VERY WELL RECEIVED, AND NEITHER OF US COULD HAVE ANTICIPATED THAT THE TITLE WE CHOSE FOR THAT FIRST SHOW — TRACK — WOULD BECOME THE STARTING POINT OF AN ONGOING “GSK / TRACK” JOURNEY. OVER THE YEARS, THIS INITIAL COLLABORATION HAS GROWN INTO A SERIES OF EIGHT EXHIBITIONS, EACH ONE CONTINUING THE DIALOGUE THAT BEGAN WITH THAT FIRST STEP.”

Spike | Artist

ART EXHIBITIONS

The long connecting walkways are not only defining features of the office space but have given name to the annual series of art exhibitions in the premises of GSK Stockmann – TRACK.

With TRACK, GSK Stockmann offers Luxembourg-based artists a platform to present contemporary art. Each edition brings together a unique combination of artists to engage in dialogue via art. Each exhibition is highlighted by a vernissage which has become a regular event for clients, business partners, colleagues, collectors and friends. The next edition is already in sight.



Spike

Dany Prum



Lukas Arons



Katarzyna Kot-Bach

Joël Rollinger



Paul Kirps



Philippe Lamesch



Stéphanie Uhres



Patrick Meyer

Frank Jons





Daniel MacLloyd



Chiara Dahlem



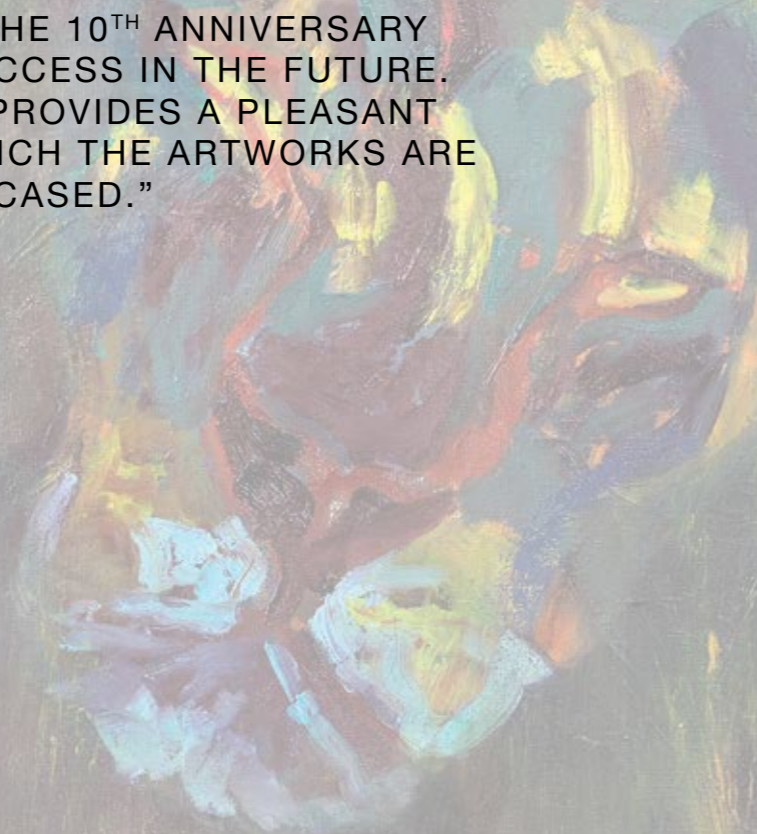
Tom Flick

Thomas Iser



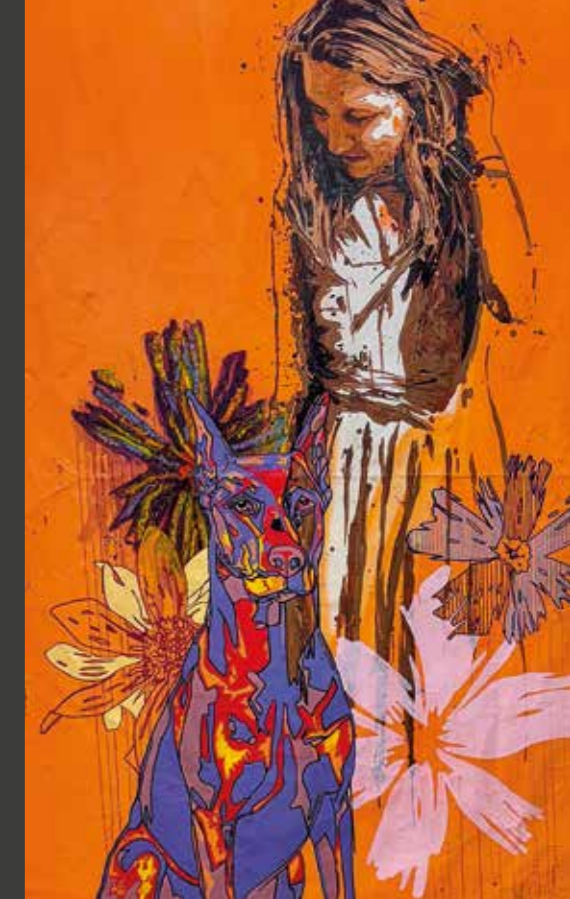
“I WOULD LIKE TO TAKE THIS OPPORTUNITY TO ONCE AGAIN THANK THE ENTIRE TEAM AT GSK FOR HAVING ALLOWED ME TO PRESENT MY PAINTINGS IN THEIR BEAUTIFUL PREMISES. I FELT VALUED AND RESPECTED AS AN ARTIST AND I STILL SOMETIMES ENJOY VISITING THEIR EXHIBITIONS. I WISH THE MANAGEMENT AND ALL EMPLOYEES A WONDERFUL CELEBRATION FOR THE 10TH ANNIVERSARY AND CONTINUED SUCCESS IN THE FUTURE. THE TRACK SERIES PROVIDES A PLEASANT ATMOSPHERE IN WHICH THE ARTWORKS ARE BEAUTIFULLY SHOWCASED.”

Nadine Cloos | Artist



Wouter Van der Vlugt

Chiara Dahlem
& Raphael Gindt



Raphael Gindt



Laure Mackel



Stick



Sumo



Joachim Van der Vlugt



Thomas Iser & Sumo

“TEN YEARS OF VISION AND GROWTH. I’M PROUD TO HAVE BEEN PART OF GSK STOCKMANN’S JOURNEY IN LUXEMBOURG AND HONOURED TO CONTRIBUTE TO THIS MILESTONE WITH A PROJECT THAT QUITE LITERALLY TAKES THEIR STORY TO NEW HEIGHTS.”

Sumo | Artist



IMPRINT

PUBLISHER

GSK
STOCKMANN

COORDINATION
Caroline Mühlfenzl
GSK Stockmann

DESIGN/LAYOUT
Vidale-Gloesener

PRINT
Reka

PRINT RUN
500

CONTACT

GSK Stockmann SA
44, Avenue John F. Kennedy
L-1855 Luxembourg
T: +352 271802-00
E: luxembourg@gsk-lux.com
www.gsk-lux.com

Copyright © 2026
by GSK Stockmann,
the photographers, artists and
other external providers.

All rights reserved. No part of this
publication may be reproduced,
distributed, transmitted in any
form or by any means, including
photocopying, recording, or
other electronic or mechanical
methods, without the prior written
permission of the publisher.

GSK
STOCKMANN